

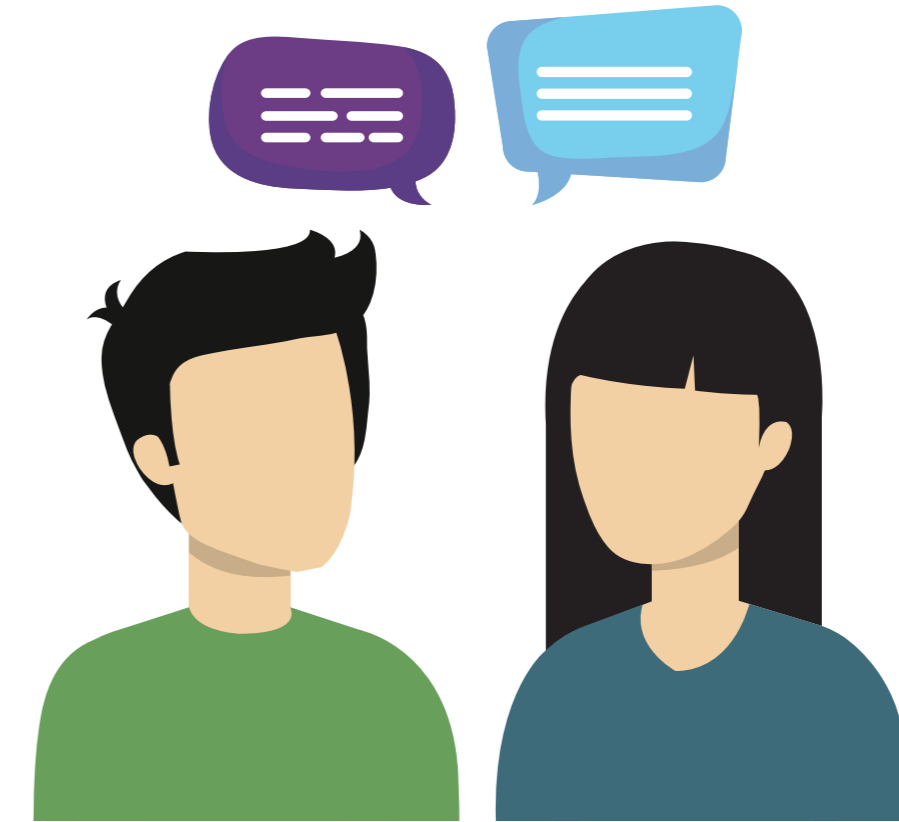
# COVID-19

## Care Priority at the A&E

Priority will be given to the following patients



Recently travelled to countries listed under [go.gov.sg/entering-singapore](https://www.go.gov.sg/entering-singapore) in the last 14 days



Been in **close proximity** with a suspect / confirmed COVID-19 patient



Have **symptoms of COVID-19**: High fever (>37.5°C) and/or respiratory problems (e.g. difficulty breathing, cough, runny nose)



With **medical emergencies** (e.g. heart attack etc.)

## DO NOT VISIT A&E

if you have mild symptoms.

Avoid long waits.

Visit GPs / Polyclinics.

**GPs, Polyclinics and all healthcare practitioners have been informed to be vigilant for COVID-19 cases and will know how to manage them.**

